

---

# Case Reports

---

## False Aneurysm (Pseudoaneurysm) of Lateral Ventricular Wall

M. Chinikar MD\*, A. M. Sadeghi Meybodi MD\*\*, and F. Hoseini MD\*\*\*

### Abstract

Pseudoaneurysms of the left ventricle are a rare complication that may occur after myocardial infarction (MI), cardiac surgery, and trauma.

Available data indicate that the most common presentation is by an incidental finding. This case of post-MI pseudoaneurysm presented herein was discovered by left ventriculography after two months following MI (*Iranian Heart Journal 2008; 9 (4):42 -46*).

**Key words:** aneurysm ■ myocardial infarction ■ ventricle, left

---

**P**seudoaneurysms (contained rupture) are a rare complication of myocardial infarction (MI).<sup>1,2</sup> The wall of a pseudoaneurysm consists of fibrous tissue and lacks the structural elements found in the normal cardiac wall. This predisposes it to further rupture and a fatal outcome.<sup>2-6</sup> The location of a pseudoaneurysm is primarily related to its cause. We hereby report a case of the pseudoaneurysm of the lateral wall of the left ventricle (LV), which had some unusual characteristics.

### Case report

A 70-year-old male patient presented with inferolateral wall MI and was referred to our clinic for a further invasive evaluation due to low functional capacity.

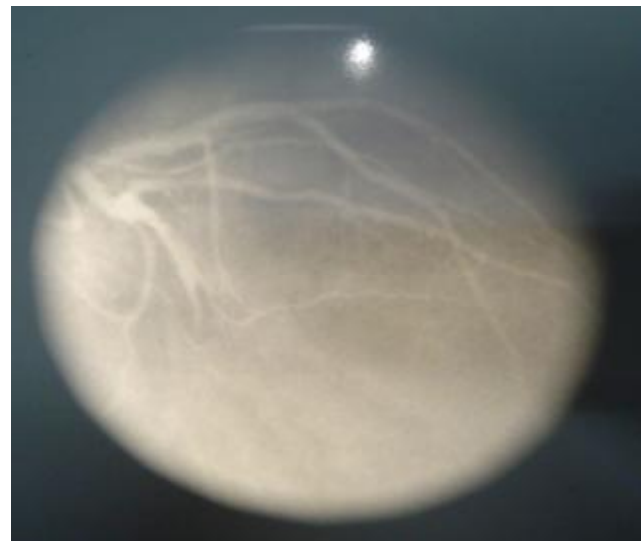
The patient's hospital and post-discharge course in the early two weeks of the post-MI phase was uncomplicated.

Echocardiography data revealed a left ventricular ejection fraction (LVEF) of 45%, inferoseptal hypokinesia, lateral wall akinesia, and 2+ mitral regurgitation (MR).

Coronary angiography and catheterization were scheduled for the patient, but he refused further evaluations.

84 days later, he came back for coronary angiography and he had no new symptoms except for low functional capacity during his daily activities.

Echocardiography was not repeated before selective coronary angiography. Coronary angiography showed a total cut-off of a prominent obtuse marginal branch (Fig. 1).



**Fig. 1.** Coronary angiography showing total cut-off of large obtuse marginal branch of left circumflex artery.

---

Received April 5, 2006; Accepted for publication Oct. 20, 2008.

\*Assistant Professor of Cardiology, \*\*Assistant Professor of Cardiac Surgery, and \*\*\*Assistant Professor of Medicine, Dr. Heshmat Hospital, Gilan University of Medical Sciences, Rasht, Iran.

Address for correspondence: M. Chinikar, MD, Dr. Heshmat Hospital, Gilan University of Medical Sciences, Imam Khomeini Blvd., Bani St., Rasht, Iran.  
Email : mchinikar@yahoo.com      Mobile : 0098 9121969577      Tel : 0098 1317729215, 0098 1316663070      Fax : 0098 1316668718